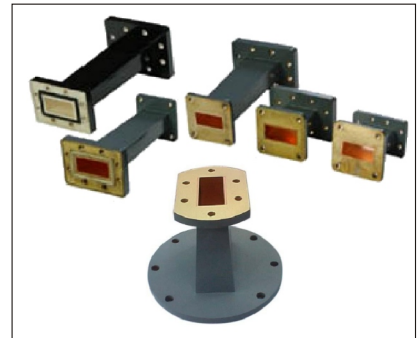


WAVEGUIDE TRANSITION

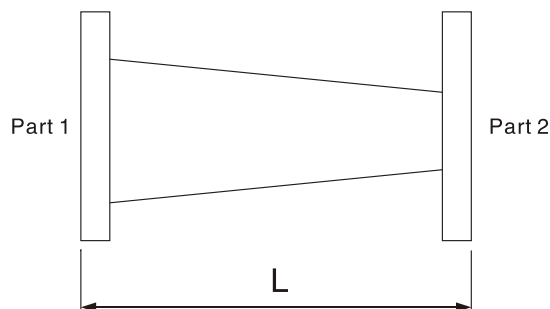
Shinhom Microwave manufactures a wide variety of waveguide transitions ranging from standard rectangular waveguide transitions in overlapping bands to custom transitions spanning multiple bands. Additional sizes, extended range, and custom design configurations are available on request.



Rectangular to Rectangular Transitions in Overlapping Bands

ELECTRICAL CHARACTERISTICS:

Part No.	Freq Range (GHz)	VSWR (Max)	Length (mm)	Port 1 WG Type		Port 2 WG Type		Flange	Material
				IEC	EIA	IEC	EIA		
SH-34WA...	0.35-0.49	1.10	1000	R3	WR2300	R4	WR2100	FDP/FDM	Al
SH-45WA...	0.41-0.53	1.10	1000	R4	WR2100	R5	WR1800	FDP/FDM	Al
SH-56WA...	0.49-0.62	1.10	900	R5	WR1800	R6	WR1500	FDP/FDM	Al
SH-68WA...	0.64-0.75	1.10	800	R6	WR1500	R8	WR1150	FDP/FDM	Al
SH-89WA...	0.75-0.98	1.10	600	R8	WR1150	R9	WR975	FDP/FDM	Al
SH-912WA...	0.96-1.15	1.10	500	R9	WR975	R12	WR770	FDP/FDM	Al
SH-1214WA...	1.13-1.46	1.10	400	R12	WR770	R14	WR650	FDP/FDM	Al
SH-1418WA...	1.45-1.73	1.10	350	R14	WR650	R18	WR510	FDP/FDM	Al
SH-1822WA...	1.72-2.20	1.10	300	R18	WR510	R22	WR430	FDP/FDM	Al/Cu
SH-2226WA...	2.17-2.61	1.10	250	R22	WR430	R26	WR340	FDP/FDM	Al/Cu
SH-2632WA...	2.60-3.30	1.10	200	R26	WR340	R32	WR284	FDP/FDM	Al/Cu
SH-3240WA...	3.22-3.95	1.10	200	R32	WR284	R40	WR229	FDP/FDM	Al/Cu
SH-4048WA...	3.94-4.90	1.10	180	R40	WR229	R48	WR187	FDP/FDM	Al/Cu
SH-4858WA...	4.64-5.99	1.10	180	R48	WR187	R58	WR159	FDP/FDM	Al/Cu
SH-5870WA...	5.38-7.05	1.10	150	R58	WR159	R70	WR137	FDP/FDM	Al/Cu
SH-7084WA...	6.57-8.17	1.10	130	R70	WR137	R84	WR112	FDP/FDM	Al/Cu
SH-84100WA...	8.20-9.99	1.10	100	R84	WR112	R100	WR90	FBP/FBM/FBE	Al/Cu
SH-100120WA...	9.84-12.4	1.10	80	R100	WR90	R120	WR75	FBP/FBM/FBE	Al/Cu
SH-120140WA...	11.9-15.0	1.10	75	R120	WR75	R140	WR62	FBP/FBM/FBE	Al/Cu
SH-140180WA...	14.5-18.0	1.10	60	R140	WR62	R180	WR51	FBP/FBM/FBE	Al/Cu
SH-180220WA...	17.6-22.0	1.10	50	R180	WR51	R220	WR42	FBP/FBM/FBE	Al/Cu
SH-220260WA...	21.7-26.7	1.15	50	R220	WR42	R260	WR34	FBP/FBM/FBE	Al/Cu
SH-260320WA...	26.3-33.0	1.15	50	R260	WR34	R320	WR28	FBP/FBM/FBE	Al/Cu
SH-320400WA...	32.9-40.0	1.15	50	R320	WR28	R400	WR22	FBP/FBM/FBE	Al/Cu
SH-400500WA...	39.2-60.1	1.20	50	R400	WR22	R500	WR19	FUGP	Cu
SH-500620WA...	49.8-59.6	1.20	50	R500	WR19	R620	WR15	FUGP	Cu
SH-620740WA...	60.5-75.8	1.20	50	R620	WR15	R740	WR12	FUGP	Cu
SH-740900WA...	73.8-91.9	1.20	50	R740	WR12	R900	WR10	FUGP	Cu



Ordering Information

Example Part No: SH - 84100 WA 100 P M A

Shinhom Microwave

WG type: R84 to R100

Product Type: WG Transition

WG Transition Length: L=100mm

Flange 1 Type: P=FBP100

Material : A=Aluminum
C=Copper

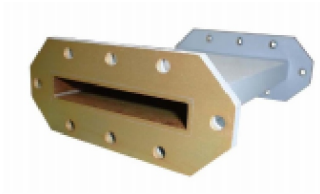
Flange 2 Type: M=FBM84

- Flange type: Multiple types available – see Shinhom Microwave Flanges page
- Finish: Corrosion protection plus black/grey top coat

Special Transitions

Transitions spanning multiple bands, rectangular to circular waveguide transitions are available.

Please consult sales engineer for more information.



WAVEGUIDE TRANSITION



Rectangular to Rectangular Adapters
in Overlapping Bands

ELECTRICAL CHARACTERISTICS:

Part No.	Port 1 WG Type (EIA)	Port 2 WG Type (EIA)	Freq Range (GHz)	Length (mm)	VSWR	Flange	Material
SH-912WA200	WR975	WR770	0.96-1.15	200	≤1.15	FDP	Al
SH-1214WA200	WR770	WR650	1.13-1.46	200	≤1.15	FDP	Al
SH-1418WA200	WR650	WR510	1.45-1.73	200	≤1.15	FDP	Al
SH-1822WA200	WR510	WR430	1.72-2.20	200	≤1.10	FDP	Al
SH-2226WA200	WR430	WR340	2.17-2.61	200	≤1.10	FDP	Al
SH-2632WA200	WR340	WR284	2.60-3.30	200	≤1.10	FDP	Al
SH-3240WA200	WR284	WR229	3.22-3.95	200	≤1.10	FDP	Al
SH-4048WA200	WR229	WR187	3.94-4.90	200	≤1.10	FDP	Al
SH-4858WA200	WR187	WR159	4.64-5.99	200	≤1.10	FDP	Al
SH-5870WA150	WR159	WR137	5.38-7.05	150	≤1.10	FDP	Al
SH-7084WA100	WR137	WR112	6.57-8.17	100	≤1.10	FDP/FBP	Cu
SH-84100WA60	WR112	WR90	8.20-9.99	60	≤1.10	FBP	Cu
SH-100120WA60	WR90	WR75	9.84-12.4	60	≤1.10	FBP	Cu
SH-120140WA50	WR75	WR62	11.9-15.0	50	≤1.10	FBP	Cu
SH-140180WA50	WR62	WR51	14.5-18.0	50	≤1.10	FBP	Cu
SH-180220WA50	WR51	WR42	17.6-22.0	50	≤1.10	FBP	Cu
SH-220260WA50	WR42	WR34	21.7-26.7	50	≤1.10	FBP	Cu
SH-260320WA50	WR34	WR28	26.5-33.0	50	≤1.10	FBP	Cu
SH-320400WA50	WR28	WR22	32.9-40.0	50	≤1.15	FBP/FUGP	Cu
SH-400500WA50	WR22	WR19	39.2-50.14	50	≤1.15	FUGP	Cu
SH-500620WA50	WR19	WR15	9.8-59.6	50	≤1.15	FUGP	Cu
SH-620740WA50	WR15	WR12	60.5-75.8	50	≤1.15	FUGP	Cu
SH-740900WA50	WR12	WR10	73.8-91.9	50	≤1.15	FUGP	Cu
SH-9001200WA30	WR10	WR8	92.2-112	30	-	FUGP	Cu
SH-12001400WA30	WR8	WR7	113-140	30	-	FUGP	Cu
SH-14001800WA30	WR7	WR5	145-173	30	-	FUGP	Cu
SH-18002200WA30	WR5	WR4	172-220	30	-	FUGP	Cu
SH-22002600WA30	WR4	WR3	217-261	30	-	FUGP	Cu

WAVEGUIDE TRANSITION

Rectangular to Circular Waveguide Transition (TE10-TE11)



ELECTRICAL CHARACTERISTICS:

Part No.	Freq Range (GHz)	Length(mm)	VSWR	WG Type EIA	Inner Diameter of Circular Waveguide(mm)	Material
SH-14RCA157	1.30-1.70	920	≤1.10	WR650	157	Al
SH-18RCA114.58	1.76-2.20	820	≤1.10	WR510	114.58	Al
SH-22RCA97.87	2.07-2.61	580	≤1.10	WR430	97.87	Al
SH-26RCA83.62	2.42-3.30	500	≤1.10	WR340	83.62	Al
SH-32RCA71.42	2.83-3.88	420	≤1.10	WR284	71.62	Al
SH-40RCA51.99	3.22-4.90	350	≤1.10	WR229	51.99	Al
SH-48RCA44.45	3.94-5.33	300	≤1.10	WR187	44.45	Al
SH-58RCA38.1	5.3-7.05	230	≤1.10	WR159	38.1	Al
SH-70RCA32.537	6.21-8.17	200	≤1.10	WR137	32.537	Al
SH-84RCA27.788	7.30-9.97	200	≤1.10	WR112	27.788	Al
SH-100RCA23.825	8.50-11.6	160	≤1.10	WR90	23.825	Cu
SH-120RCA17.415	11.6-15.0	130	≤1.10	WR75	17.415	Cu
SH-140RCA15.088	13.4-18.0	100	≤1.10	WR62	15.088	Cu
SH-180RCA12.7	15.9-21.8	100	≤1.15	WR51	12.7	Cu
SH-220RCA9.525	21.2-26.7	60	≤1.15	WR42	9.525	Cu
SH-260RCA8.331	24.3-33.0	60	≤1.15	WR34	8.331	Cu
SH-320RCA7.137	31.8-40	50	≤1.15	WR28	7.137	Cu
SH-400RCA5.563	36.4-49.8	50	≤1.15	WR22	5.563	Cu
SH-500RCA4.369	46.3-59.6	40	≤1.15	WR19	4.369	Cu
SH-620RCA3.581	56.6-75.8	30	≤1.15	WR15	3.581	Cu
SH-740RCA3.175	63.5-87.2	30	≤1.15	WR12	3.175	Cu
SH-900RCA2.388	84.8-112	20	≤1.15	WR10	2.388	Cu