

SLMB-TCM2-43X

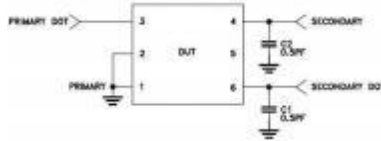
Features

- wide bandwidth 10 to 4000 MHz
- balanced transmission line
- excellent return loss
- aqueous washable

Applications

- PCS
- wideband push-pull amplifiers
- cellular

Electrical Schematic



50Ω 10 to 4000 MHz

Electrical Specifications at 25°C

Parameter	Frequency(MHz)	Min.	Typ.	Max.	Unit
Impedance Ratio	-	-	2	-	-
Frequency Range	-	10	-	4000	Mhz
Insertion Loss*	10-4000	-	1.3	3.0	dB
Amplitude Unbalance	10-4000	-	0.5	-	dB
Phase Unbalance†	10-4000	-	7	-	Degree

Maximum Ratings

Operating Temperature	-40°C to 85°C
Storage Temperature	-55°C to 100°C
RF Power Input*	0.4W
DC Current	30mA

Permanent damage may occur if any of these limits are exceeded.

Pin Connections

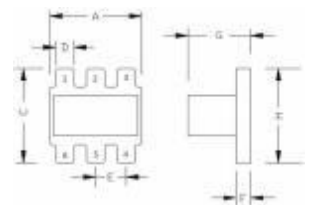
PRIMARY DOT	3
PRIMARY	1,2
SECONDARY DOT	6
SECONDARY	4
GND	1,2
NOT USED	5

Typical Performance Data

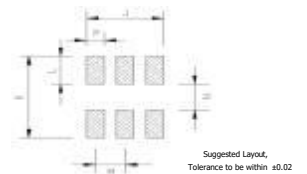
(TEST CONDITIONS: INPUT POWER = 0dBm @Temperature = +25°C)

FREQUENCY (MHz)	INSERTION LOSS (dB)	INPUT R. LOSS (dB)	AMPLITUDE UNBALANCE (dB)	PHASE UNBALANCE (Deg.)
10	1.88	15.46	0.08	0.74
100	1.76	15.22	0.03	1.07
500	1.61	14.98	0.24	4.40
1000	1.35	15.87	0.32	5.96
1500	1.17	17.86	0.09	6.73
2000	1.09	21.30	0.23	7.01
2500	1.11	24.93	0.52	7.71
3000	1.17	25.06	0.82	6.95
3500	1.26	23.10	0.79	5.04
4000	1.55	16.24	0.81	3.16

Outline Drawing



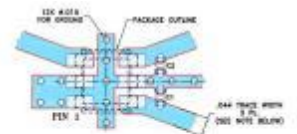
PCB Land Pattern



Outline Dimensions, Unit (mm)

A	3.81	C	3.81	D	0.76
E	1.27	F	0.61	G	2.61
H	3.81	J	3.30	K	4.83
L	1.65	N	1.53	M	1.27
WT	0.15g		P	0.76	

Suggested PCB Layout



COMPONENT SIZE: 0.5 x 0.5 (mm)

NOTE: 1. TRACE WIDTH IS SHOWN FOR BOARD ROUGHEN WITH SELECTIVE FINISHES. 80/20 μm. 2. FOR OTHER MATERIALS TRACE WIDTH MAY NEED TO BE ADJUSTED. 3. BOTTOM SIDE OF THE PCB IS CONDUCTIVE GROUND PLANE. 4. CRIP COMPONENT FOOT PRINTS SHOWN FOR REFERENCE. FOR COMPONENT VALUES REFER TO 96-001A. 5. DIMENSIONS FOR COPPER LAYOUT WITH SOLDER (SOLDER MASK OVER BARE COPPER)

